



BB02-1H :- 2.54mm (0.10") PIN HEADER, SINGLE ROW, U TYPE, THROUGH HOLE, 02 TO 40 CONTACTS

SPECIFICATIONS

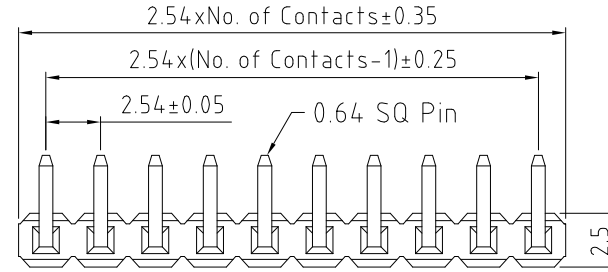
CURRENT RATING	3 AMP
VOLTAGE RATING	250V AC/DC
CONTACT RESISTANCE	20m OHMS MAX..
INSULATOR RESISTANCE	1000 MEGOHMS MIN.
DIELECTRIC WITHSTANDING	500 V AC/MINUTE
OPERATING TEMPERATURE	-40°C TO +105°C
CONTACT MATERIAL	BRASS
INSULATOR MATERIAL	THERMOPLASTIC, UL 94V-0
	STANDARD : NYLON 6T
PLATING	GOLD, TIN, OR SELECTIVE OVER 30-50U" NICKEL
SOLDERABILITY:	IR REFLOW: 260°C FOR 10 SEC
	WAVE: 230°C FOR 5-10 SEC
	MANUAL SOLDER: 350°C FOR 3-5 SEC

NOTES:

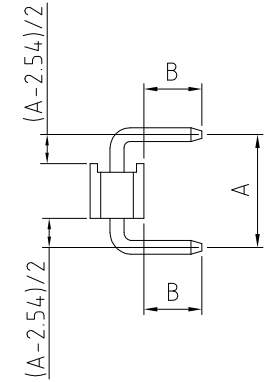
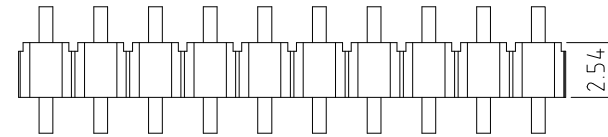
- BULK PACKAGE IN BAG.
- LONGER PIN LENGTH MIGHT BE POSSIBLE, CONTACT GRAD CONN FOR MORE INFORMATION.

MATES WITH -

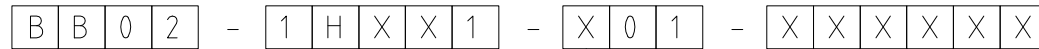
BB02-JB	BB02-JG
BB02-JC	BB02-JK
BB02-JD	BB02-JL
BB02-JE	BB02-JT
BB02-JF	BB02-KR



(EXAMPLE OF 10 CONTACTS PART)



HOW TO ORDER

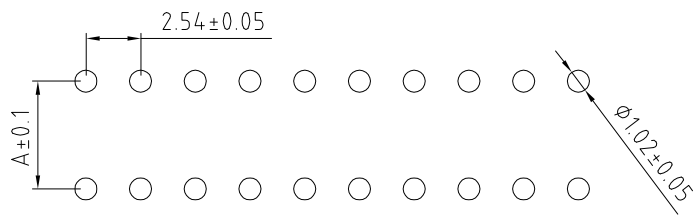


NO. OF CONTACTS:
02 TO 40

CONTACT PLATING OPTIONS :
K = GOLD FLASH (STANDARD)
T = BRIGHT TIN
M = MATT TIN
P = 10U" GOLD ALL OVER
Q = 15U" GOLD ALL OVER
R = 30U" GOLD ALL OVER

PIN LENGTH A (1/10mm)
SPECIFY PIN LENGTH
STANDARD = 050 = 5.0mm
MINIMUM = 050 = 5.0mm
MAXIMUM = 200 = 20.0mm
TOL.: ±0.25mm
(SEE NOTE 2.)

PIN LENGTH B (1/10mm)
SPECIFY PIN LENGTH
STANDARD = 026 = 2.6mm
MINIMUM = 020 = 2.0mm
MAXIMUM = 150 = 15.0mm
TOL.: ±0.25mm



RECOMMENDED PCB HOLE LAYOUT

REV.	DATE & DRN
10	07/03/12 - NYW RELEASE
11	27/02/13 - NYW AMEND PLATING OPTIONS.
12	13/05/13 - NYW ADD MATING HALVES
13	06/09/13 - NYW AMEND A MAX. LENGTH TO 200

Scale: 4:1	THIRD ANGLE	Unstated Tolerances: X ± 0.30 X ± 0.25 XX ± 0.15 XXX ± 0.10	Material SEE NOTE
Drawn: NYW			
App'd: XXXX	Title: PIN HEADER		NOT TO SCALE
Date: 6 SEP. '13	Revision: 1.3		Unit: mm

www.gradconn.com

THIS DRAWING IS CONFIDENTIAL AND MUST NOT BE COPIED OR DISCLOSED WITHOUT WRITTEN CONSENT

Type: BB02-1H
BB02-1H
Drawing Number:
Sheet 1 of 1
Drawing © E and O E