

BB02-1F :- 2.00mm (0.079") PIN HEADER, SINGLE ROW, U TYPE, THROUGH HOLE, 02 to 40 CONTACTS

SPECIFICATIONS

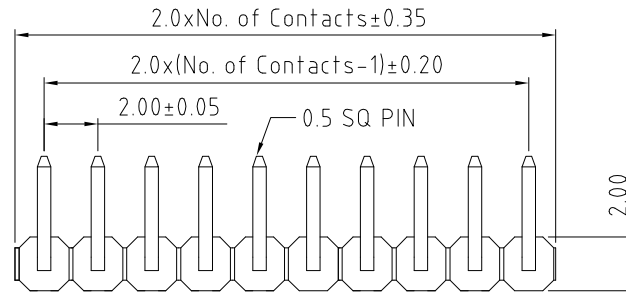
CURRENT RATING	2 AMP
VOLTAGE RATING	150V AC/DC
CONTACT RESISTANCE	20m OHMS MAX.
INSULATOR RESISTANCE	5000 MEGOHMS MIN.
DIELECTRIC WITHSTANDING	AC 500 V
OPERATING TEMPERATURE	-40°C TO +105°C
CONTACT MATERIAL	BRASS
INSULATOR MATERIAL	THERMOPLASTIC, UL 94V-0
	STANDARD : NYLON 6T
PLATING	GOLD, TIN, OR SELECTIVE OVER 30-50U" NICKEL
SOLDERABILITY:	IR REFLOW: 260°C FOR 10 SEC
	WAVE: 230°C FOR 5-10 SEC
	MANUAL SOLDER: 350°C FOR 3-5 SEC

NOTES:

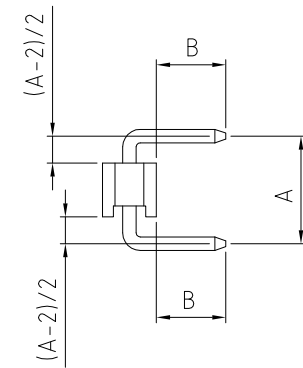
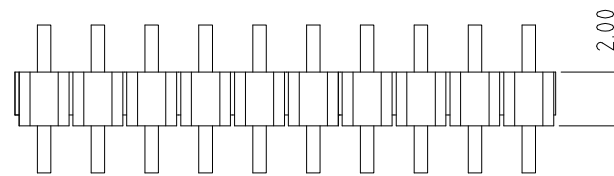
1. BULK PACKAGE IN BAG.

MATES WITH: -

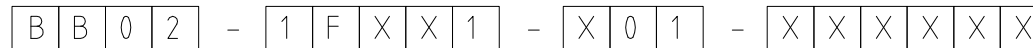
BB02-GD	BB02-RW
BB02-GS	
BB02-RK	
BB02-RS	



(EXAMPLE OF 10 CONTACTS PART)



HOW TO ORDER

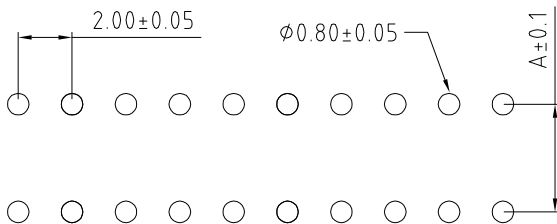


NO. OF CONTACTS:
02 TO 40

CONTACT PLATING OPTIONS :
K = GOLD FLASH (STANDARD)
X = BRIGHT TIN
M = MATT TIN
P = 10U" GOLD ALL OVER
Q = 15U" GOLD ALL OVER
R = 30U" GOLD ALL OVER

PIN LENGTH A (1/10mm)
SPECIFY PIN LENGTH
STANDARD = 050 = 5.0mm
MINIMUM = 040 = 4.0mm
MAXIMUM = 200 = 20.0mm
TOL.: ±0.25mm

PIN LENGTH B (1/10mm)
SPECIFY PIN LENGTH
STANDARD = 026 = 2.6mm
MINIMUM = 020 = 2.0mm
MAXIMUM = 150 = 15.0mm
TOL.: ±0.25mm



RECOMMENDED PCB HOLE LAYOUT

REV. DATE & DRN 1.0 11/05/11 - NYW RELEASE 1.1 17/05/11 - NYW 1.2 06/07/11 - NYW 1.3 27/02/13 - NYW 1.4 07/05/13 - NYW	Scale: 5:1	THIRD ANGLE	Unstated Tolerances: X ± 0.30 X ± 0.25 XX ± 0.15 XXX ± 0.10	Material SEE NOTE	 www.gradconn.com THIS DRAWING IS CONFIDENTIAL AND MUST NOT BE COPIED OR DISCLOSED WITHOUT WRITTEN CONSENT	Type: BB02-1F
	Drawn: NYW					BB02-1F
	App'd: XXXX	Title: PIN HEADER		NOT TO SCALE		Drawing Number:
	Date: 13 MAY '13	Revision: 1.4		Unit: mm		Sheet 1 of 1
					Drawing © E and O E	