

CH03-BE - SIM CARD HOLDER WITH SWITCH 6 OR 8 PINS

FEATURES

1. GENERAL CHARACTERISTICS

DIMENSIONS: 29.65L x 17.20W x 3.00H mm
 WEIGHT: APPROX. 1.43g
 CONTACT PRINCIPLE: FRICTION TECHNOLOGY
 OPERATING POSITION: SHAFT UP / DOWN / HORIZONTAL
 MOUNTING SYSTEM: SMT TYPE (post optional)
 DURABILITY: 10,000 CYCLES MIN.

2. MECHANICAL CHARACTERISTICS

INSULATION MATERIAL: THERMOPLASTIC, UL 94V-0
 PLATING: GOLD FLASH ON CONTACT AREA/TIN ON SOLDER TAIL

3. ELECTRICAL CHARACTERISTICS

CONTACT RESISTANCE: 50m OHMS TYP. 100m OHMS MAX.
 INSULATION RESISTANCE: > 1000M OHMS / 500V DC
 SWITCH TYPE: BLADE (Normally Open)
 RATED CURRENT: 1A MAX.
 RAGED VOLTAGE: 50V MAX.
 WITHSTANDING DIELECTRIC VOLTAGE: 500V AC R.M.S. FOR 1 MINUTE

4. SOLDERABILITY

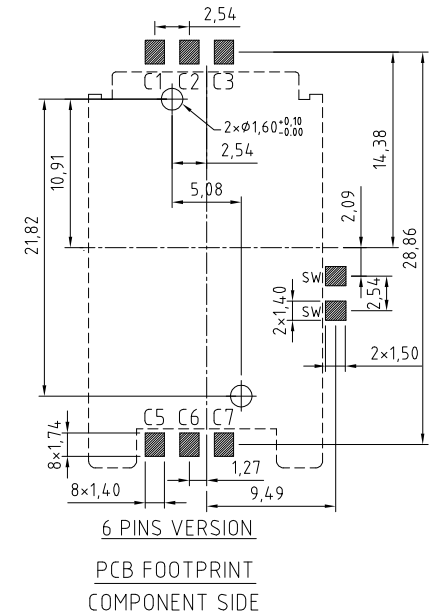
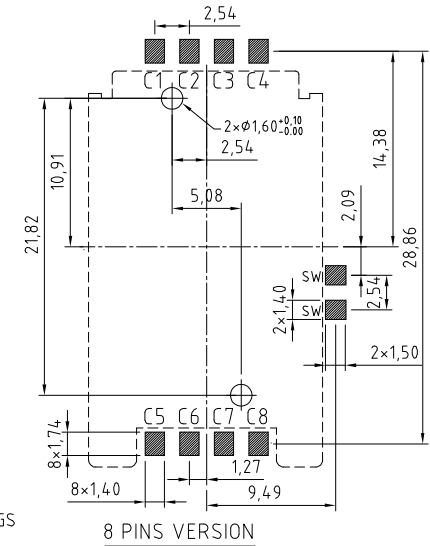
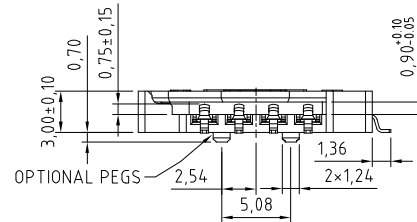
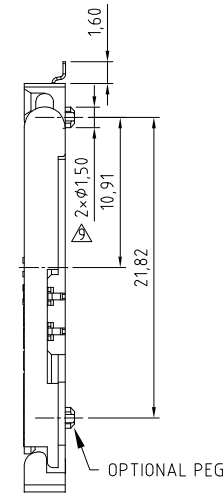
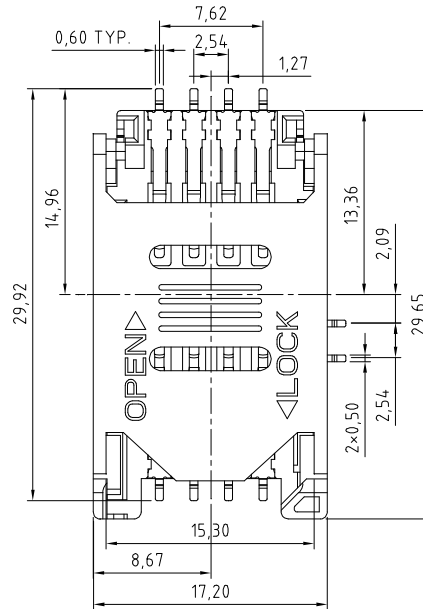
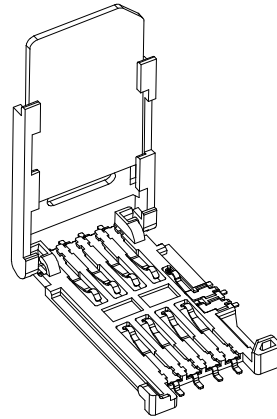
WAVE: NOT APPLICABLE
 IR REFLOW: 260°C, 10 SEC. MAX.
 MANUAL SOLDERING: 360°C, 3 SEC. MAX.

5. ENVIRONMENTAL CHARACTERISTICS

OPERATING TEMPERATURE: -40°C ~ +85°C
 OPERATING HUMIDITY: 10% ~ 95% RH
 STORAGE TEMPERATURE: -40°C ~ +85°C
 STORAGE HUMIDITY: 10% ~ 95% RH

NOTES:

1. ACCEPTABLE SIM CARD SIZE SHOULD MEET GSM 11.11 SPECIFICATION REQUIREMENT.



HOW TO ORDER



NO. OF CONTACTS
06 OR 08

WITH OR WITHOUT
LOCATING PEG
A = WITH
B = WITHOUT

PACKAGING OPTIONS
R = REEL
(600PCS/REEL)

REV. DATE & DRN	10 14/09/04-NYW RELEASE
11 01/02/05-GRC	
AMEND FEATURES	
12 24/04/07 - NYW	
ADD NOTE 1.	
13 28/09/07 - NYW	
REMOVE PACK OPTION TRAY	
14 21/11/07 - NYW	
ADD SEPARATE PCB LAYOUT	
15 04/06/08 - NYW	
ADD ELECTRICAL SPEC.	
16 28/07/09 - PN	
PACKAGING DRAWING ADDED	
17 27/07/11 - NYW	
DRAWING MODIFICATION	
18 27/07/11 - NYW	
INSULATOR BASE CHANGE	
PLATING CHANGE	
19 28/06/12 - NYW	
DRAWING AMENDMENT	

Scale:	2:1	THIRD ANGLE	Unstated Tolerances: 0 Dec Places 1 Dec Places 2 Dec Places 3 Dec Places	Material	SEE NOTE
Drawn:	NYW				
App'd:	XXXX	Title	SIM CARD ACCEPTOR	NOT TO SCALE	
Date:	28 JUN '12	Revision:	1.9	Unit:	mm

www.gradconn.com

THIS DRAWING IS CONFIDENTIAL AND MUST NOT BE COPIED OR DISCLOSED WITHOUT WRITTEN CONSENT

Type:	CH03-BE
CH03-BE	
Drawing Number:	
Sheet 1	of 2
Drawing	© E and O E

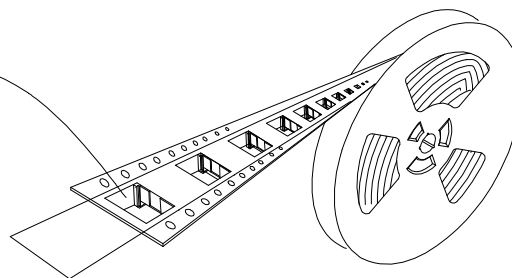
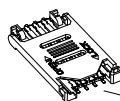
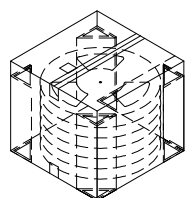
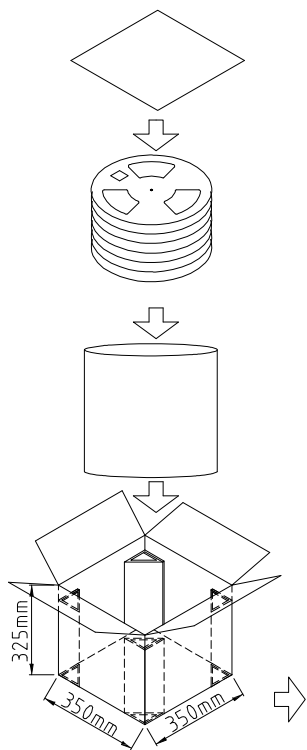
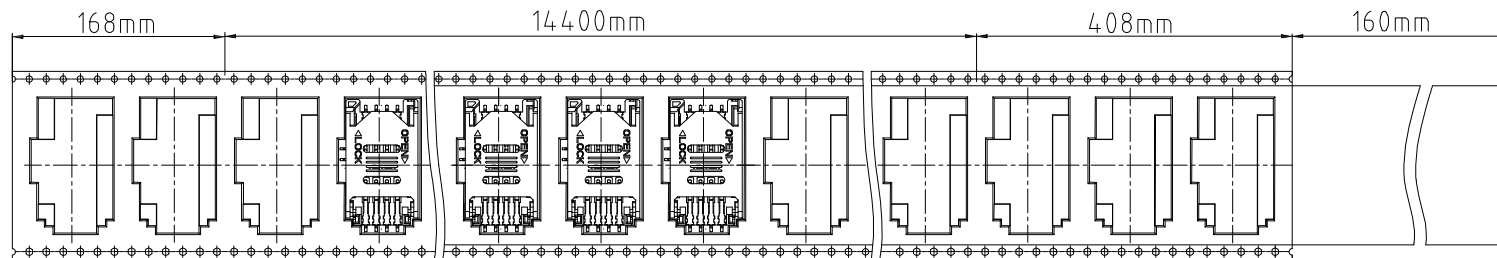
CH03-BE - SIM CARD HOLDER WITH SWITCH 6 OR 8 PINS - PACKAGING DRAWING

REELING DIRECTION

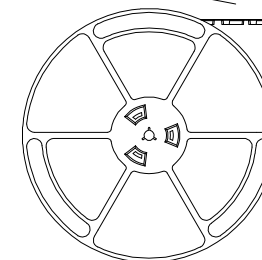
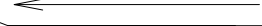


REEL CENTER WITH 7 EMPTY CARRIER

WITH 17 EMPTY CARRIER AT FRONT END



REELING DIRECTION



NOTES:

1. REEL DIA.: 33CM.
2. 600PCS PER REEL, GROSS WEIGHT: 1.39KG.
3. 6 REELS PER FULL CARTON, GROSS WEIGHT: 9.54KG.

REV. DATE & DRN

10 28/07/09 - PN

PACKAGING DRAWING ADDED

11 22/12/11 - NYW

CONNECTOR AMENDMENT.

Scale: NTS	THIRD ANGLE	Unstated Tolerances: 0 Dec Places 1 Dec Places 2 Dec Places 3 Dec Places	Material SEE NOTE
Drawn: PN			NOT TO SCALE
App'd: XXXX	Title SIM CARD ACCEPTOR	Unit: mm	
Date: 22 DEC '11	Revision: 1.1		

www.gradconn.com

THIS DRAWING IS CONFIDENTIAL AND MUST NOT BE COPIED OR DISCLOSED WITHOUT WRITTEN CONSENT

Type: CH03-BE
CH03-BE
Drawing Number:
Sheet 2 of 2
Drawing © E and O E